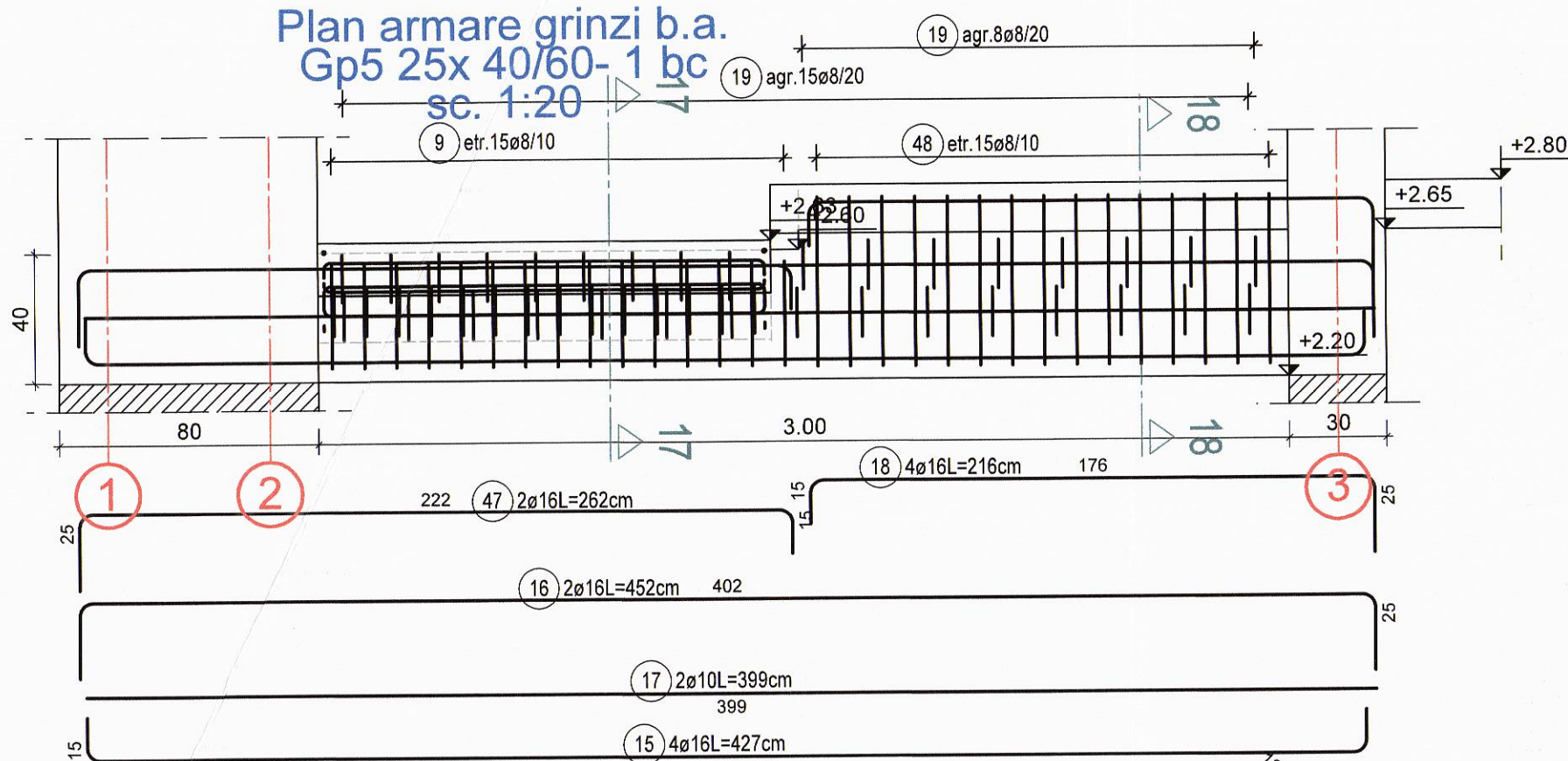
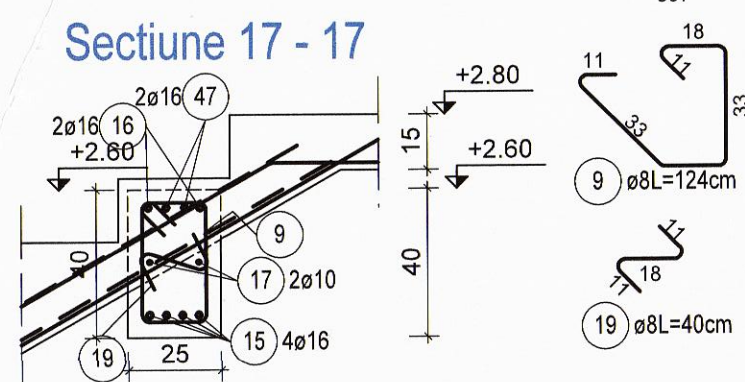


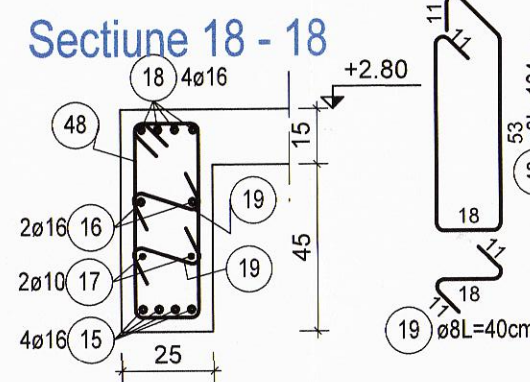
Plan armare grinzi b.a.
Gp5 25x 40/60- 1 bc
sc. 1:20



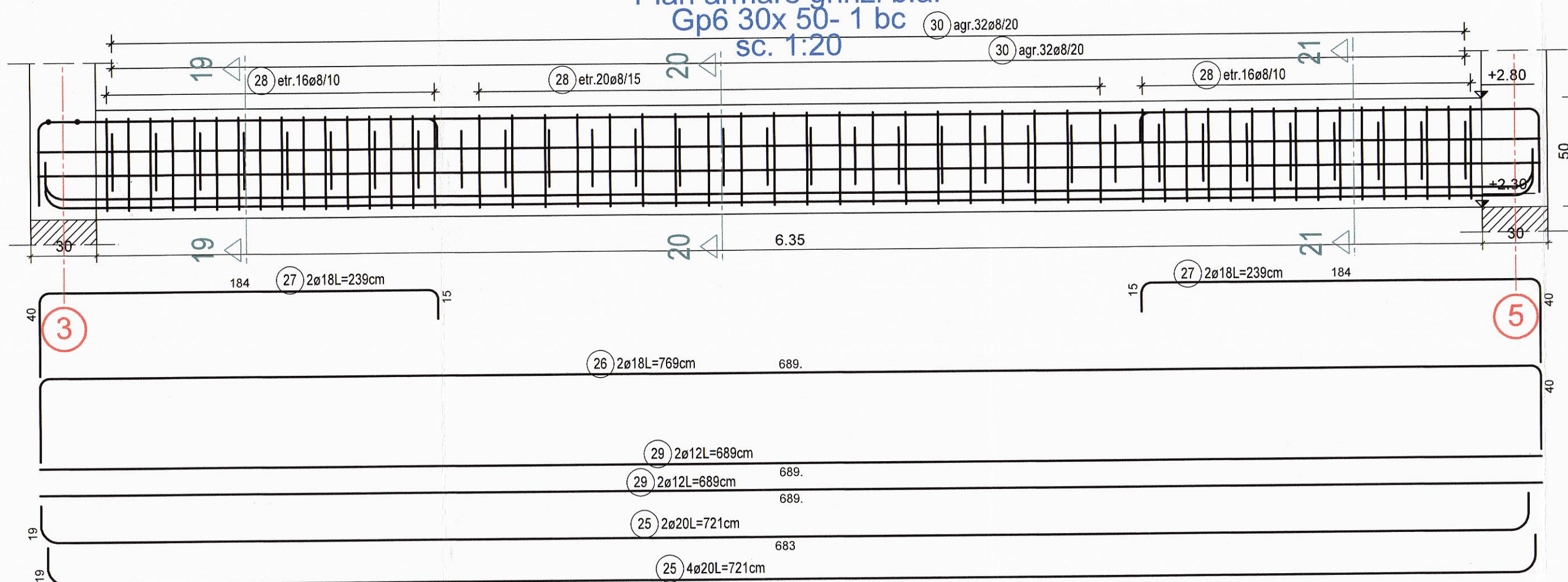
Sectione 17 - 17



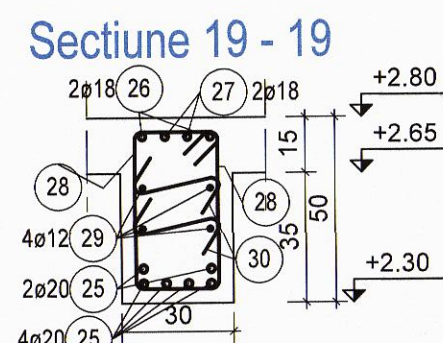
Sectione 18 - 18



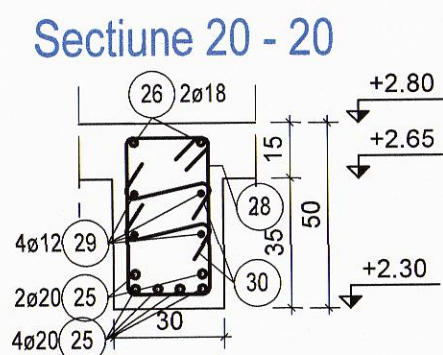
Plan armare grinzi b.a.
Gp6 30x 50- 1 bc
sc. 1:20



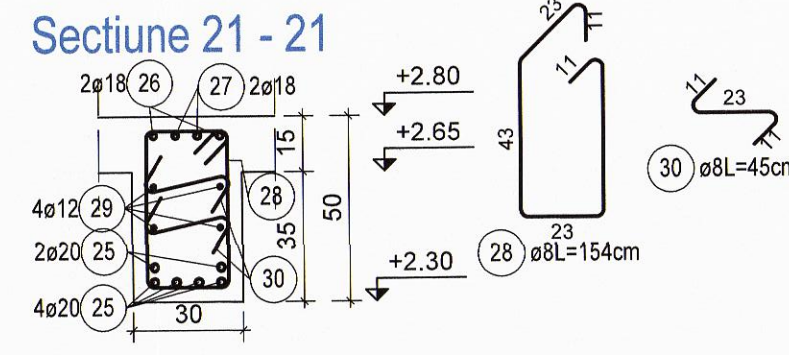
Sectione 19 - 19



Sectione 20 - 20

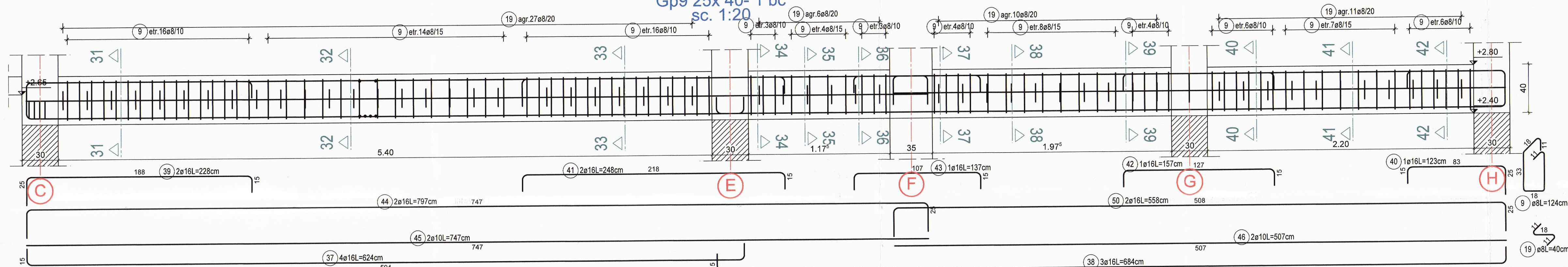


Sectione 21 - 21

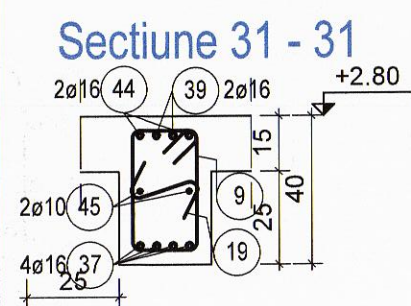


NOTA:
Turnarea planseului din b.a se realizeaza concomitent
cu turnarea centurilor, grinzi si rampelor scarii etajului curent

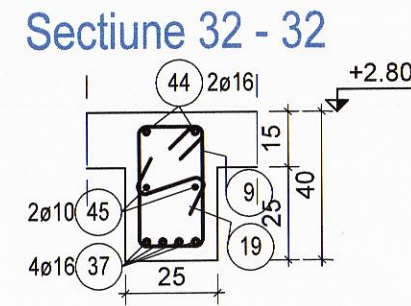
Plan armare grinzi b.a.
Gp9 25x 40- 1 bc
sc. 1:20



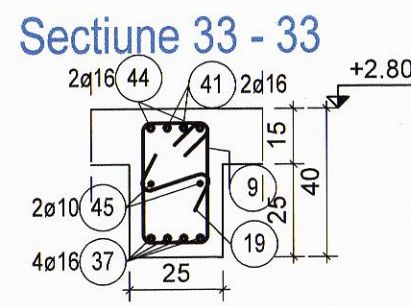
Sectione 31 - 31



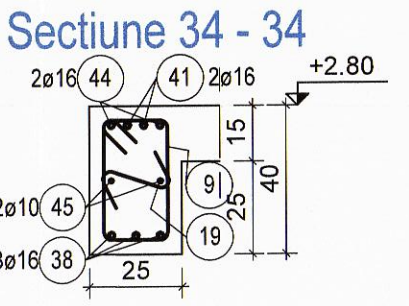
Sectione 32 - 32



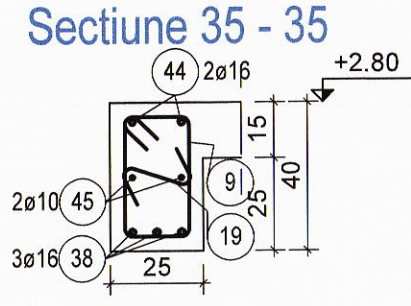
Sectione 33 - 33



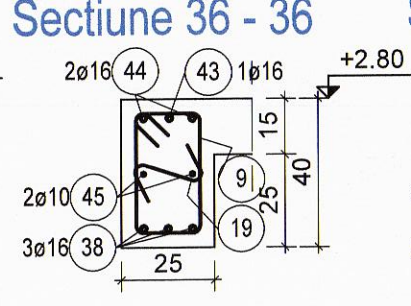
Sectione 34 - 34



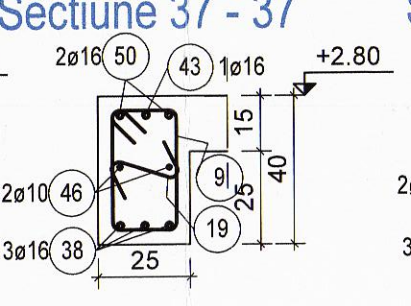
Sectione 35 - 35



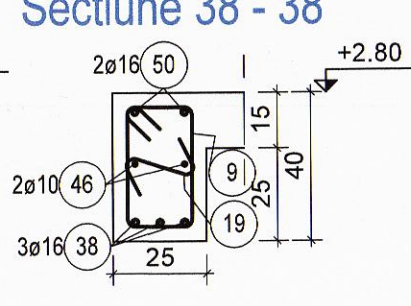
Sectione 36 - 36



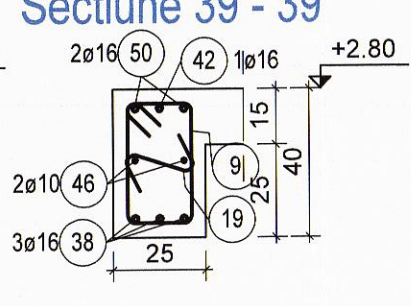
Sectione 37 - 37



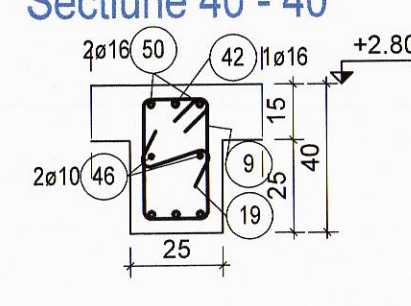
Sectione 38 - 38



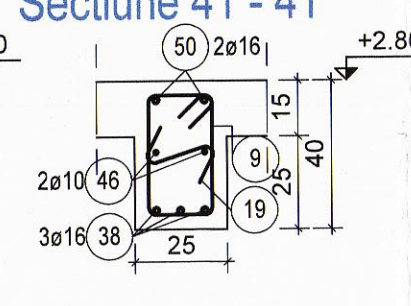
Sectione 39 - 39



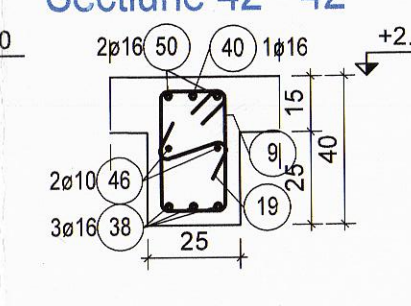
Sectione 40 - 40



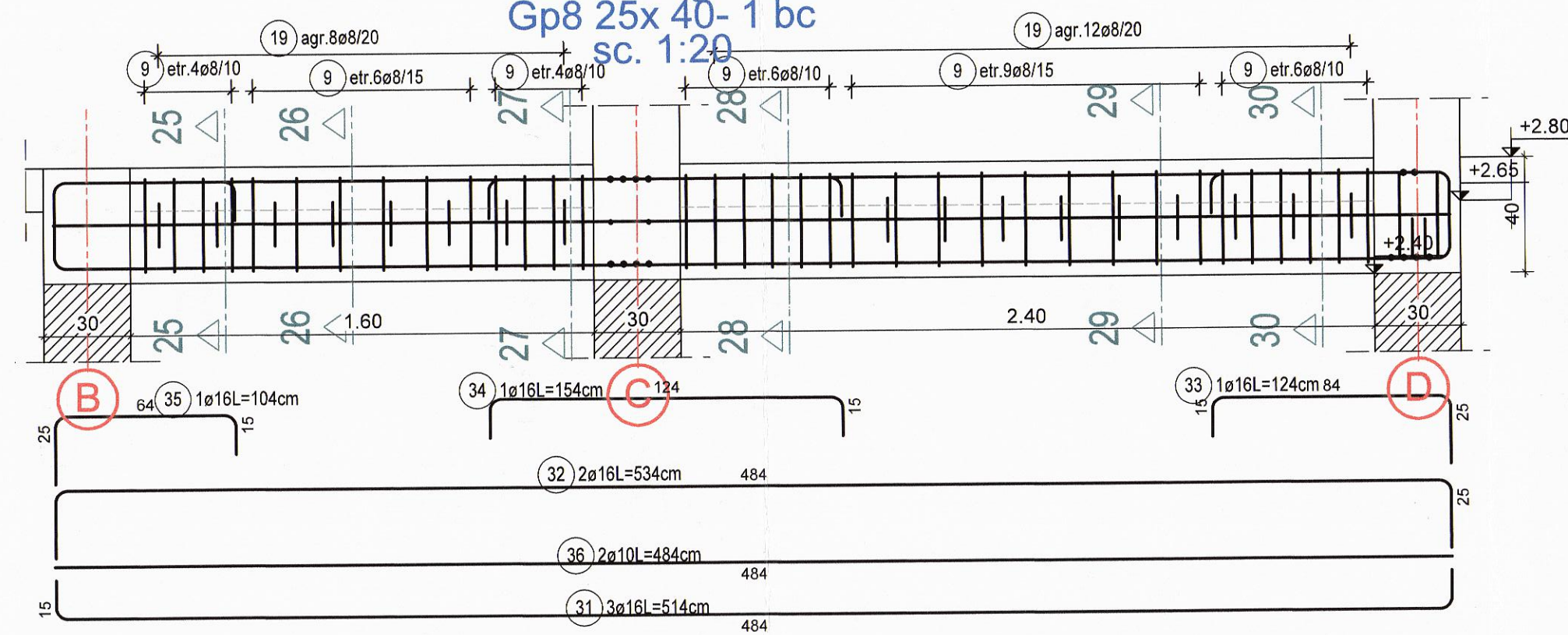
Sectione 41 - 41



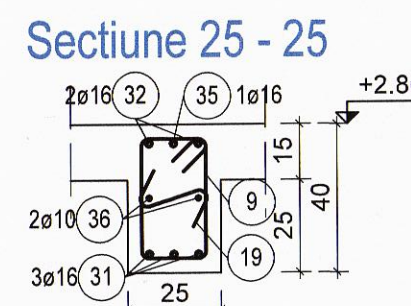
Sectione 42 - 42



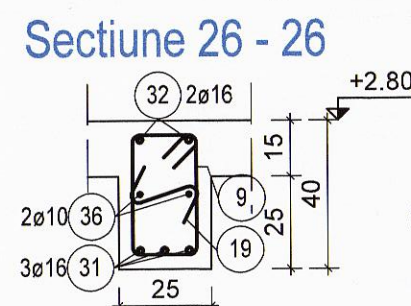
Plan armare grinzi b.a.
Gp8 25x 40- 1 bc
sc. 1:20



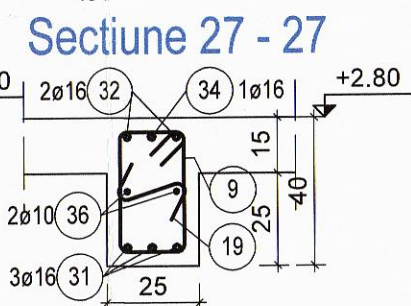
Sectione 25 - 25



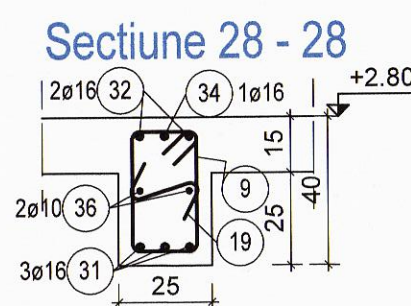
Sectione 26 - 26



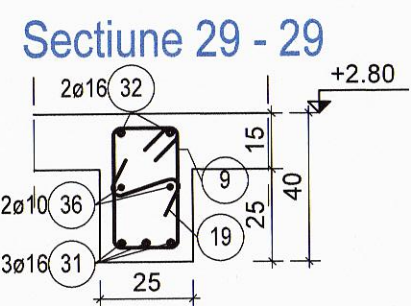
Sectione 27 - 27



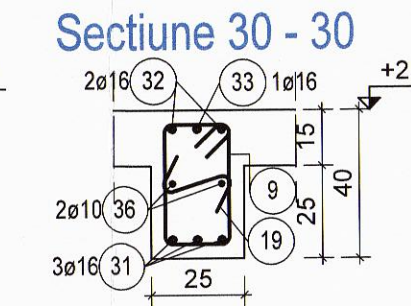
Sectione 28 - 28



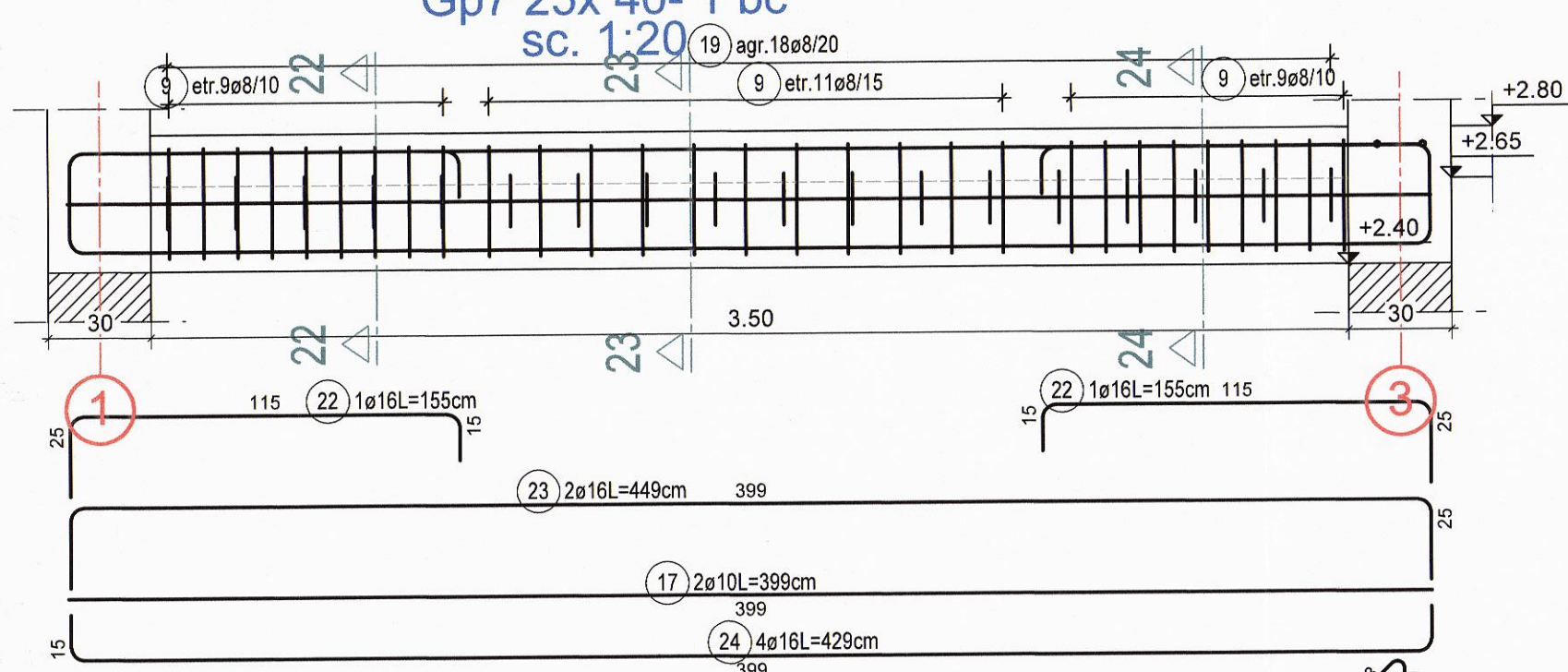
Sectione 29 - 29



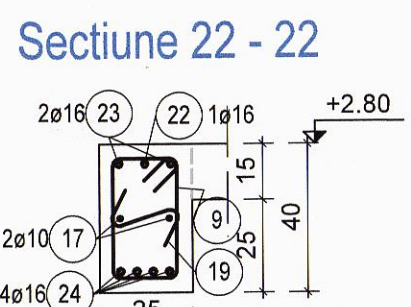
Sectione 30 - 30



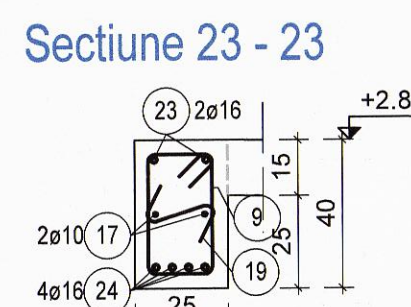
Plan armare grinzi b.a.
Gp7 25x 40- 1 bc
sc. 1:20



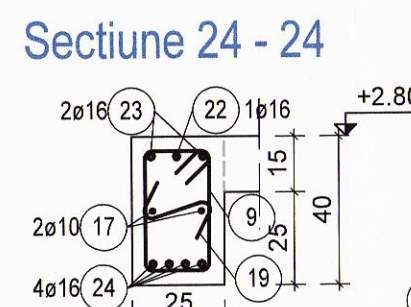
Sectione 22 - 22



Sectione 23 - 23



Sectione 24 - 24



se vor citi impreuna plansele R08,R09, R10, R11, R12

Materiale:
Beton: conform SR EN 206-1
Beton armat :
Beton clasa C20/25 - XC1; D11/20; A/C = 0,50, S3, Cl.0.1%, Dmax16
-stapi, samburi, centuri, grinzi, scara, plansee b.a.-
OTEL
BST500S, clasa de ductilitate

Categoria de importanta a constructiei, conform HGR 766/1997:C
Clasa de importanta conform P100-1/2013-III.
ag = 0.25g, Tc = 0.7 s,
Clasa de expunere a constructiei : mediu uscat moderat.

		PROIECTARE, CONSULTANTA, ASISTENTA TEHNICA IN DOMENIILE CONSTRUCTII CIVILE, INDUSTRIALE SI AGRICOLE		ISO 9001 ISO 14001 OHSAS 18001		PLANSA R 28 FAZA P.TH.-D.E	
MANAGER PROIECT		Ing. GHEORGHE JUNE		Ing. RANJA CRISTINEL NICOLAE		Ing. RANJA CRISTINEL NICOLAE	
SEF PROIECT		arh. Cristian Musat		Ing. RANJA CRISTINEL NICOLAE		Ing. RANJA CRISTINEL NICOLAE	
PROIECTAT		Ing. RANJA CRISTINEL NICOLAE		Ing. RANJA CRISTINEL NICOLAE		Ing. RANJA CRISTINEL NICOLAE	
DESENAT		Ing. RANJA CRISTINEL NICOLAE		Ing. RANJA CRISTINEL NICOLAE		Ing. RANJA CRISTINEL NICOLAE	
DATE		31005 / 08.10.2019		31005 / 08.10.2019		31005 / 08.10.2019	
DATE		dec. 2019		dec. 2019		dec. 2019	

Plan armare grinzi b.a.:
Gp5, Gp6, Gp7,
Gp8, Gp9